



PLEASE PRINT CLEARLY AND COMPLETE BOTH PART 1 AND PART 2:

YOUR NAME: \_\_\_\_\_

YOUR COMPANY: \_\_\_\_\_

ADDRESS: \_\_\_\_\_

CITY: \_\_\_\_\_ STATE/PROVINCE: \_\_\_\_\_

POSTAL/ZIP CODE: \_\_\_\_\_ PHONE: \_\_\_\_\_ FAX: \_\_\_\_\_

E-MAIL ADDRESS: \_\_\_\_\_

SHIP-TO ADDRESS: (IF DIFFERENT FROM ABOVE)

ATTN: (NAME) \_\_\_\_\_

ADDRESS: \_\_\_\_\_

CITY: \_\_\_\_\_ STATE/PROVIDENCE: \_\_\_\_\_ POSTAL/ZIP CODE: \_\_\_\_\_

P.O. NUMBER: \_\_\_\_\_ QUANTITY ORDERED: \_\_\_\_\_

TODCO SERIAL NUMBER OF DOOR YOU ARE REPLACING (IF AVAILABLE): \_\_\_\_\_
(THIS IS LOCATED ON THE TAG INSIDE THE DOOR ON THE DRIVER'S SIDE, ON THE FIRST INTERMEDIATE PANEL FROM THE TOP)

MAKE & YEAR OF TRAILER OR TRUCK BODY: \_\_\_\_\_

DOOR TYPE & FINISH:

- 3/4" Plywood
Prime Only (Std)
ToughShell Prime&TC White \*
Spray Paint\* (color)
3/4" WeatherTite™
Impregnated White (Std)
Spray Paint \* (color)
1/4" (7.5mm) ArmorPlate™
Prepainted White (Std)
Spray Paint \* (color)
3/8" (10mm) ArmorPlate™
Prepainted White (Std)
Spray Paint \* (color)
1/2" (13mm) ArmorPlate™
Prepainted White (Std)
Spray Paint \* (color)
1-1/8" TODCOLD™
Spray Paint White (Std)
2-1/2" TODCOLD™
Spray Paint White (Std)
FleetStar™
Mill Finish (Std)
Powder Coat White \*
CityCargo™
Mill Finish (Std)
Powder Coat White \*

INTERIOR HARDWARE FINISH

- Standard
E-Coat Black \*
EverWare \*
Stainless Steel \*

EXTERIOR HARDWARE FINISH

- Standard
E-Coat Black \*
EverWare \*
Stainless Steel \*

LOCK TYPE:

- Maximum Security MS Lock (Std) "J-Hook"
Inside Release MS Lock \*
LifeGuard MS Lock \*
Single-Point Slam Lock \* (Straight pin into sill)
Two-Point Slam Lock \* (Latches to vertical track)

SIDE SEALS:

- Standard Rubber \*
Push-In Vinyl \*
Brush \*
Push-In Brush \*

TOP SEAL:

- Mounted on Header of Body
Mounted on Top Panel
Mounted on Both\*

TRACK & COUNTERBALANCE:

- 1" Track (Std)
Single Spring CB (Std)
2" Track
Single Spring CB (Std)
Dual Spring CB

CB FINISH:

- Standard
E-Coated/Plated \*

UPGRADE OPTIONS:

- Precision Rollers \*
WondeRoller™ \*
SupeRoller™ \*
Stainless Steel Rivets \*
HD Cable Anchor Bracket \*
High Strength Hinges \*
Brush Top Seals \*
Header Mounted
Top Panel Mounted

DOOR IS:

- Complete (w/ Tracks & CB)
Drop-In (w/o Tracks & CB)
Door with Tracks Only (No CB)
Door with CB Only (No Track)
Other: \_\_\_\_\_

- Additional Charge \*
Doors are custom built and CANNOT be returned
Visit www.TODCO.com for door & part identification

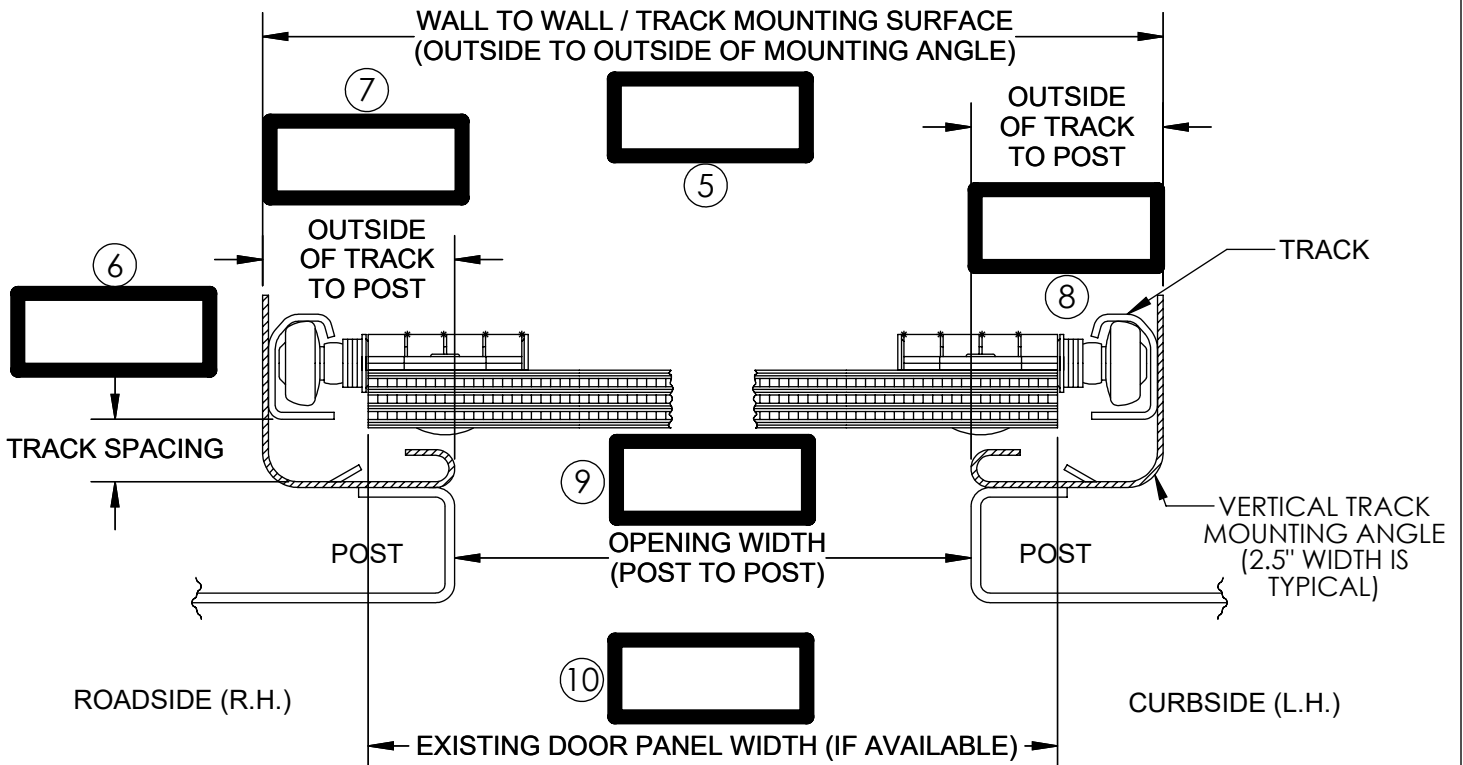
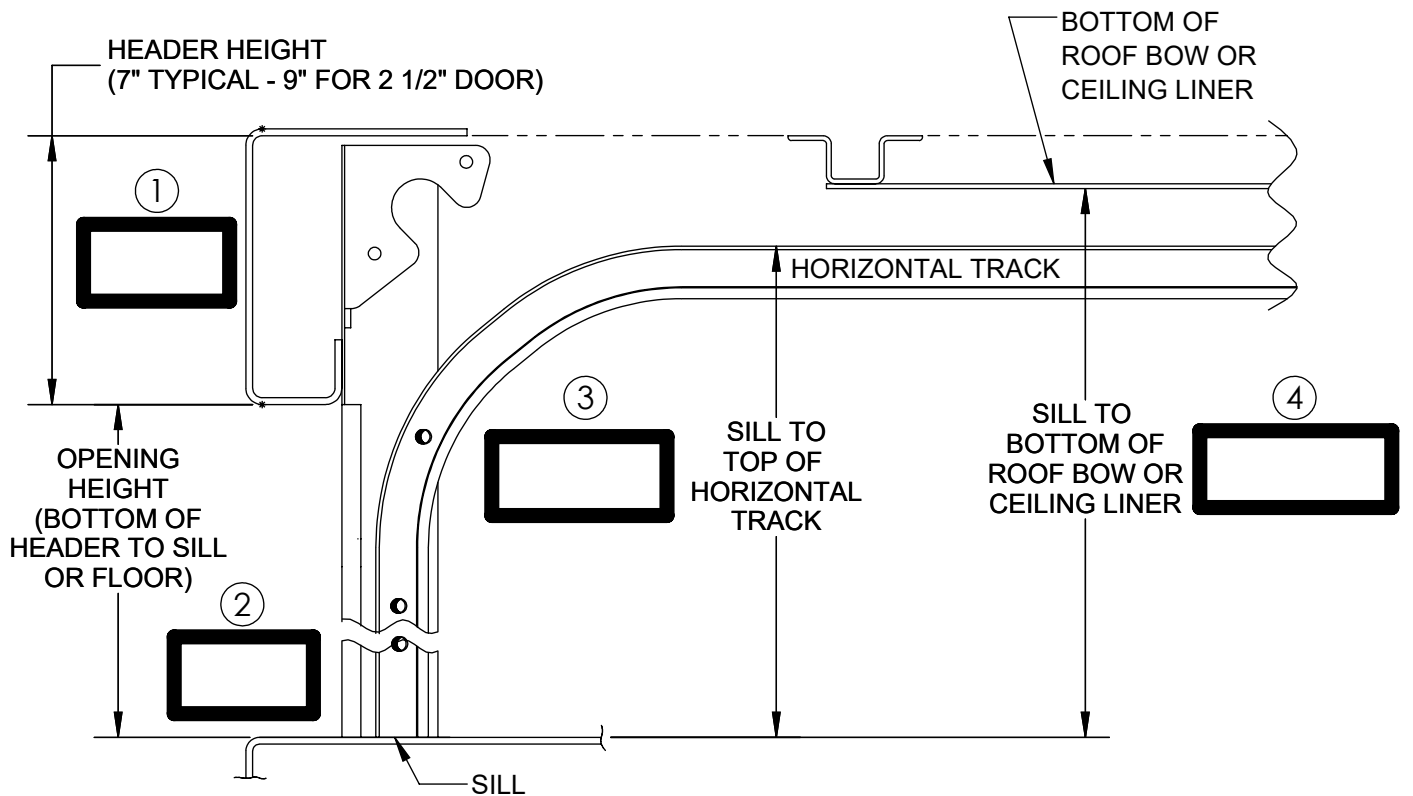
Complete and fax or email both pages of this form to TODCO
fax: 1-800-248-6326 email: orders@todco.com



# TODCO ROLL-UP DOOR ORDER FORM

# PART:2

Please fill in the dimensions (in inches) for all blank squares (1 through 10) on the diagrams on this page. All doors are made for net opening width, NOT wall-to-wall dimensions.



Complete and fax or email both pages of this form to TODCO  
fax: 1-800-248-6326 email: orders@todco.com

PART#00341G