

# ROLL-UP SHUTTER DOOR



**TODCO<sup>®</sup>**



# HISTORY HAS A WAY OF REPEATING ITSELF.

**F**or more than 40 years TODCO has been the leader and innovator in roll-up doors for the truck body and trailer industry. Over a decade ago we took our experience and expertise and applied them to the design of roll-up shutters doors. And the result? A proven interior or exterior door solution that's as durable as it is easy to install and maintain – period.

## SIMPLY DESIGNED TO BE TOUGH

TODCO's roll-up shutter doors are constructed of either anodized aluminum (that can be painted to match your vehicle) or bright-brushed anodized aluminum for long-lasting durability. The low temperature side seal is designed to withstand the cracking and breaking caused by weathering and aging for an enduring, trouble-free life.

The thin panels are constructed with nylon end-guides to ensure quiet and smooth operation without continual lubrication. Each panel is intersealed to prevent the effects of inclement weather, such as freezing rain and sub-zero temperatures. The panel face is flat and has an attractive and unique appearance. A rubber strip is fitted on the bottom panels, creating a seal that acts like a sound-absorbing buffer.

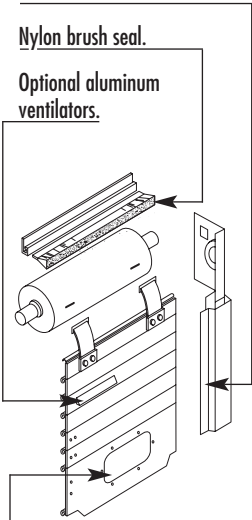
Our roll-up shutter doors have a front/roll configuration that can be customized to fit any application. The standard installation is a header/counterbalance design that enables the door to “coil up” into a header, requiring as little as five inches of headroom (toward the upper, front area of the compartment), resulting in no loss of useable space.

Counterbalance assembly rolls door in a coil.

Side seal.

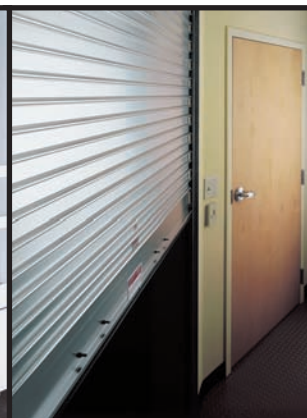
Nylon brush seal.

Optional aluminum ventilators.



Your choice of lock types.

Your TODCO representative is ready to assist you in determining door sizes and easy installation systems.



### RESPONSE VEHICLES

The members of the Covington, Kentucky SWAT team save both time and space when they need to retrieve their gear quickly. Open doors no longer get in the way. Now they simply roll up and out of sight.

### UTILITY BODIES

TODCO's roll-up shutter door provides safe and total access to equipment on this utility vehicle.

### ARCHITECTURAL

The roll-up shutter door seen here actually serves as the exit and entrance to an office. The door aids in the aesthetics of the office, as well as creating complete privacy when needed.

### FURNITURE

Another example of the roll-up shutter door's interior use, this contemporary version of a workbench makes a statement and provides superior security.



## THE ADVANTAGES OF TODCO'S ROLL-UP SHUTTER DOORS

- Rolls up and out of your way
- Space-saving design requires as little as five inches of headroom for installation
- No rollers or cables to maintain for smooth operation
- Lightweight, quick and easy opening
- Provides total access to equipment
- Multiple applications for interior and exterior use
- Simple design minimizes margin of error during installation
- Manufactured by the leader in roll-up truck doors
- Adaptable for a wide variety of applications

## ROLL-UP SHUTTER DOOR APPLICATIONS

The TODCO roll-up shutter door is easily customizable to fit a variety of uses. As pictured, the roll-up shutter door has been used in numerous types of applications. And that's just the beginning — our door can be made for just about anything imaginable, including:

- Truck bodies  
(including utility and service body trucks)
- Lube trucks used to service off-road equipment
- Tractors
- Storage boxes
- Generator doors
- Specialty furniture
- Interior doors
- Wrecker toolboxes
- Airline refuelers
- Tool compartments
- Fire trucks
- Carnival trailers
- Pull trailers
- Horse trailers
- Racing trailers



**CAB COMPARTMENTS**

The roll-up shutter door's lightweight and simple design makes for easy opening and installation.



**VAN BODIES**

The minimum five inches of required headroom for installation leaves more room for important storage space, while allowing for smooth and easy operation.





# LOCK & HANDLE OPTIONS

## TODCO ROLL-UP DOORS

### TRANSPORTATION CORE™

- 3/4" and 1" Dryfreight
- 3/4" and 1" Aluminum Clad
- 3/4" and 1" Polyply
- 1" Long Hauler

### EXTRUDED ALUMINUM

- FleetStar™ Double Wall
- CityCargo™ Single Wall
- Roll-up Shutter Door

### PULTRUDED FIBERGLASS

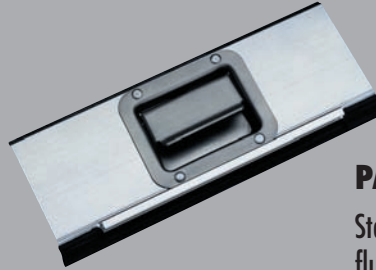
- 1-1/8" RouteMaster™

### INSULATED FIBERGLASS

- 1-1/8" PolarGuard™
- 2-1/2" PolarGuard

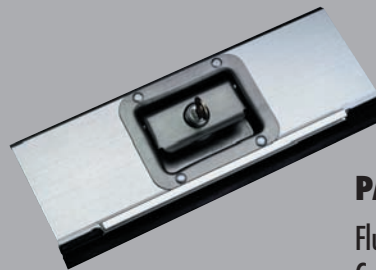
## TODCO SWING DOORS

- ToughCore™
- ArmorTech™



### PADDLE HANDLE: NON-KEYED

Standard easy-opening handle provides an overall flush surface. Constructed of polished stainless steel.



### PADDLE HANDLE: KEYED

Flush surface with the added protection of a keyed lock. Constructed of polished stainless steel.



### KEYED OR NON-KEYED BAR LATCH

Designed to make opening the door easier when wearing thick protective gloves.

OPENING HEIGHT	HEADER HEIGHT	COMPARTMENT DEPTH
Up to 40"	5" Minimum	12" Minimum Inside
41" to 70"	7" Minimum	12" Minimum Inside
71" to 90"	9" Minimum	13.5" Minimum Inside



1332 Fairground Road East  
Marion, Ohio 43302  
(740) 383-6376

**NOT JUST TOUGH...TODCO-TOUGH.**

[www.todco.com](http://www.todco.com)

For new orders and order inquiries, fax 1-800-24-TODCO (1-800-248-6326).

TODCO reserves the right to change product specifications at any time without notice.